

Move/series ATEX

Bring mobile payment in petrol station environment



- Support mobile payment in Potentially Explosive atmospheres with an ATEX-certified POS terminal
- Optimize revenue opportunities with 24/7 connectivity
- Combine portability and security for the best consumer experience

ingenico



Designed for the petrol industry, the Move/series EX range brings an innovative payment solution and improves the consumer's experience at gas stations.

Color displays, large keypads and ergonomic interfaces

Payments anywhere and anytime

- 4G, 3G, GPRS, Dual SIM, Bluetooth and WiFi

All methods of payment accepted

- EMV Chip & PIN, contactless, magstripe or digital wallets and QR-code based payments

Fast integrated printer

ATEX certified for Cat 3 (Zone 2)

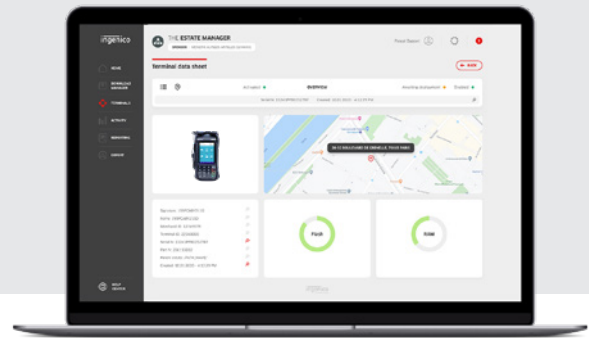
CE II 3 G Ex ic IIA T3 Gc

Raising the bar on security with PCI PTS compliancy

Long-lasting battery for the lengthy working day (up to 2900mAh)

Supported by Ingenico's suite of services

- Fleet management & security solutions
- Hardware services
- Professional services



			MOVE/ 5000 EX	MOVE/ 3500 EX	MOVE/ 2500 EX
Processor	• Application & Crypto processor	• Cortex A5	✓	✓	✓
Memory	• Internal	• 256 MB Flash, 128 MB RAM	N/A	✓	✓
	• External	• 512 MB Flash, 128 MB RAM • 512 MB Flash, 512 MB RAM • MicroSD up to 32GB	N/A	N/A	Option
OS		• Telium TETRA	✓	✓	✓
SIM		• 2 SIM	Option	Option	Option
SAM		• 2 SAM • 3, 4 or 5 SAM	Option	Option	Option
Card readers	• Magstripe	• ISO 1/2/3, 500K lifespan	✓	✓	✓
	• Smart card	• EMV Level 1, 500K lifespan	✓	✓	✓
	• Contactless	• EMV Level 1 compliant	✓	✓	✓
Display	• Colour	• 2.4" backlit, QVGA (320x240 pixels) • 3.2" backlit, QVGA (480x320 pixels) • 3.5" backlit, HVGA (480x320 pixels)	N/A	N/A	✓
			N/A	✓	N/A
			✓	N/A	N/A
Touchscreen	• Resistive	• 100K lifespan signature	✓	N/A	N/A
Keypad		• 16 keys, raised marking, backlit • 20 keys, raised marking, backlit	✓	N/A	N/A
			N/A	✓	✓
Audio	• Buzzer		✓	✓	✓
	• Speaker	• Mono	Option	N/A	N/A
Video	• Video accelerator	• H264 codec	✓	N/A	N/A

			MOVE/ 5000 EX	MOVE/ 3500 EX	MOVE/ 2500 EX
Thermal Printer	• Speed in lines/s	• up to 24 lines/s	N/A	N/A	✓
	• Paper roll cage	• up to 30 lines/s • 58 mm width x Ø 40 mm • 58 mm width x Ø 25 mm	✓	✓	N/A
			Option	N/A	N/A
Terminal connectivity	• WAN	• 4G and/or 3G and GPRS	Option	Option	Option
	• LAN	• WiFi and/or Bluetooth	Option	Option	Option
	• Multicom	• WAN + LAN	Option	Option	N/A
Terminal connections	• USB	• Host & Slave	✓	✓	✓
	• Power Supply	• Dedicated power Jack	✓	✓	✓
Battery	• Li-ion	• 2900mAh • 2200mAh	✓	✓	Option
			Option	Option	✓
Terminal size		• 169 x 78 x 57 mm (6.6x3.1x2.2") • 160 x 81 x 58 mm (6.3x3.2x2.7")	✓	✓	N/A
			N/A	N/A	✓
Weight	• Terminal with battery and Holster	• 454 g (16 oz) • 439 g (15,5 oz) • 418 g (14,8 oz)	✓	N/A	N/A
			N/A	✓	✓
			N/A	N/A	✓
Environment	• Operating Temperature	• 0°C to +50°C (32°F to 122°F)	✓	✓	✓
	• Storage Temperature	• -20°C to +55°C (-4°F to 131°F)	✓	✓	✓
	• Operating Humidity	• 85% non-condensing at +40°C (104°F)	✓	✓	✓
Accessory	• Stylus kit		Option	N/A	N/A
Security		• PCI PTS 5.x online & offline certified	✓	✓	✓



www.ingenico.com

ingenico