

Desk/5000

Speeding up checkout at the counter



- Provide a robust design for demanding situations
- Enable multiple alternative payment methods
- Manage easily space constraints at the counter thanks to a seamless connection to PIN pads Series

ingenico



With the ability to connect to other POS devices - including the Desk/1600 PIN pads for richer customer interactions - Desk/5000 is focused on payment in all forms.



Optimized checkout time: Payments anywhere and anytime

- Multiple alternative payment methods supported
- Intuitive user interface and card readers

Robust design for demanding environment:

- Responsive keypad improves PIN entry
- Advanced outer casing

Highest security:

- Compliant with the latest global and local PCI regulations
- Optional PCI compliant privacy shield
- Kensington lock for safety

Speeding up check-out with Desk/1600

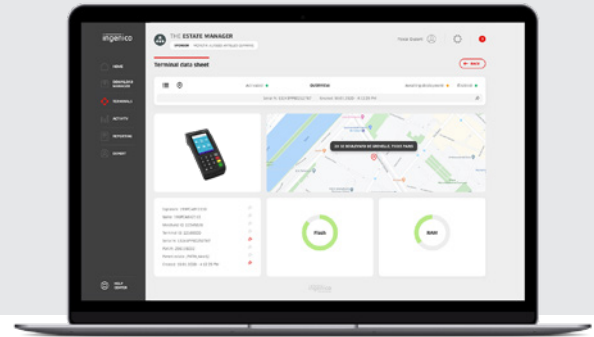
- Saving space on the worktop and speeding up checkout

Maximized network availability:

- 4G, 3G, GPRS, Bluetooth, WiFi
- Ethernet

Supported by Ingenico's suite of services

- Fleet management & security solutions
- Hardware services
- Professional services



Processor	• Application & Crypto processor	• Cortex A5	✓
Memory	• Internal • External	• 512 MB Flash, 512 MB RAM • MicroSD up to 32GB	✓ Option
OS		• Telium TETRA	✓
SIM		• 2 SIM	Option
SAM		• 2 SAM • 3 SAM	✓ Option
Card readers	• Magstripe • Smart card • Contactless	• ISO 1/2/3, 500K lifespan • EMV Level 1, 500K lifespan • EMV Contactless L1 3.0 spec compliant	✓ ✓ ✓
Display	• Colour	• 3.5" backlit, HVGA (480x320) pixels	✓
Touchscreen	• Resistive • Capacitive		✓ Option
Keypad		• 16 hardtop keys, raised marking, backlit	✓
Audio	• Buzzer • Speaker • Audio Jack	• Mono • Stereo	✓ Option Option
Video	• Video accelerator	• H264 codec	✓
Thermal printer	• Speed in l/s • Paper roll cage	• 20 l/s • 58 mm width x Ø 40 mm	✓ ✓

Terminal connectivity	• Wireless	• 4G and/or 3G with fallback • Bluetooth Class 2 • Wi-Fi • Dial-up MODEM	Option Option Option
	• Wired	• Ethernet 10/100 base T	✓
Terminal connections	• USB	• 1 USB Host • 1 USB Slave	✓ ✓
	• Power Supply	• Dedicated power Jack • 1 RS232 • 2nd RS232	✓ Option
Power supply		• 16 W or 32 W	✓
Terminal size		• 187x82x68 mm (7.3x2.6x3.2x2.6")	✓
Weight		• 340 g (12 oz)	✓
Environment	• Operating Temperature • Storage Temperature • Operating Humidity	• 0°C to +40°C (32°F to 104°F) • -20°C to +55°C (-4°F to 131°F) • 85% non-condensing at +40°C (104°F)	✓ ✓ ✓
Accessory	• Magic Box • Privacy shield • Stylus Kit	• 1xRS + 1xPower+1xEth.+1xLine In • 2xRS + 1xPower+1xEth.+1xLine In • Factory mounted • Field upgradable	Option Option Option Option
Security		• PCI PTS 6.x & 5.x online & offline certified	✓



www.ingenico.com

ingenico